

# MUSEUM OF EARLY TRADES & CRAFTS

A TREASURY OF AMERICAN CREATIVITY AND INGENUITY

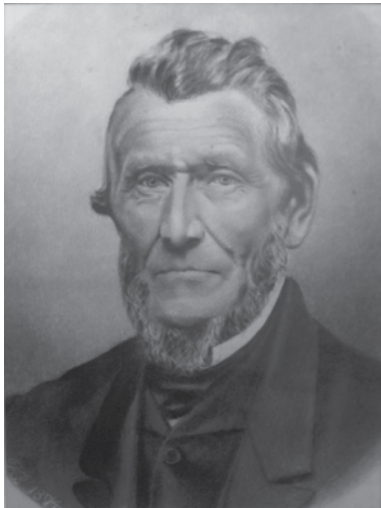
SUMMER 2011

Madison, New Jersey

## **CALEB THE CARPENTER**

The Museum of Early Trades & Crafts has a new guest who has moved across the country to take up permanent residence in the METC collection. “Caleb Burroughs, Cabinetmaker,” seen below, is now proudly displayed in our lower level exhibit space.

This past March, the Museum received a phone call from



Susan Kohr. Ms. Kohr mentioned that she and her sister, Martha Lewis, both of whom now live in California, were “thinning out their households” for a change of residence. Would the Museum of Early Trades & Crafts like to have a charcoal sketch of their Great-Great-Great Grandfather (1799-1885) Caleb Carter Burroughs? They wanted to make sure that this treasured family

heirloom of a relative created in 1874 by a relative—Frank Carter Burroughs (Grandson of Caleb)—would have a safe and loving new home. The Museum responded with a resounding “Yes!”

The beautifully framed portrait arrived in April, much to the delight of Curator Peter Rothenberg, who has displayed the piece artfully in the Cabinetmaker section of our permanent exhibits. Curator of Education Meg Wastie is equally delighted, as the Cabinetmaker exhibit is featured prominently in the Museum’s *Sawdust & Nails* and *Craftsman* programs for Boy Scouts. When the Scouts complete their toolbox construction, they always pose by the Cabinetmaker exhibit for their group picture. Now Mr. Burroughs himself will always be part of the picture.

The craft of Carpentry/Cabinetmaking has been exhibited as part of the Museum’s offerings since the Lands opened the Museum in 1969. After the renovation of the building in the mid-1990s, the “Main Street Craftsmen” displays were moved to the lower level and were designed to highlight specific artisans who lived and worked in Madison during the 19<sup>th</sup> century. The display was based on notes Reverend

## TABLE OF CONTENTS:

Caleb the Carpenter	Cover
Letter From the Director	2
ECLC & EPOCH Artists Inspired by Museum	3
<i>Craftsman of the Year</i> Reception	4
Calendar of Events	5
Summer Camp for a Day	6
Thank You's	7
Downtown Concert Series	8

S. L. Tuttle made in the 1850s and which were printed in William Parkhurst Tuttle’s 1916 book, *Bottle Hill and Madison*. Tuttle memorialized:

William Sayres, the Shoemaker “who also keeps the Post Office;” Elias Bruen, the Cooper; Fredrick Springer, the Distiller; and “the cabinet manufactory [that] is owned by [Presbyterian] Deacon [Caleb] Burroughs and his son Edwin, who are likewise the undertakers for this section of the country.” Caleb Burroughs established the family carpentry and undertaking business in 1820. In the late 1800s the cabinetry part of the business was dropped, possibly due to availability of mass-produced products. Although the company was later sold, the name Burroughs is still affiliated with the undertaking business Burroughs, Kohr & Dangler Funeral Home (established 1820) at 106 Main Street in Madison.

Continued on page 4.

## SAVE THE DATE

Tuesday, August 23<sup>rd</sup>  
10AM-2PM

## CALEB THE CARPENTER

Summer Camp for a Day

Learn more about Summer Camp for a Day on page 6.

## Museum of Early Trades & Crafts

founded by Edgar & Agnes Land in 1969 with their original collection of over 3,000 artifacts.

### Mission Statement

The mission of the Museum of Early Trades & Crafts is to enhance the understanding and appreciation of America's past by presenting and interpreting the history, culture and lives of ordinary people through educational programs, through preservation and stewardship of our collection, and through exhibition and demonstration of the trades and crafts practiced in New Jersey from its earliest settlement.

METC gratefully acknowledge generous funding from:

1772 Foundation • Borough of Madison

The Charles L. Read Foundation • F.M. Kirby Foundation

The Fatzler Foundation • Hyde & Watson Foundation

Institute of Museum and Library Services

Investors Savings Bank Charitable Foundation • Madison Rotary

Morris County Board of Chosen Freeholders

Morris County Historic Preservation Trust • Russell Investment Group

The Museum of Early Trades & Crafts received an operating support grant from the New Jersey Historical Commission, a division of the Department of State.

### METC Trustees

Allen Black, <i>Chair</i>	Thomas Judd
Michele Luciano Faas, <i>Vice Chair</i>	Dorothy Meaney
Astri Baillie, <i>Secretary</i>	Judith N. Mullins
David Strand, <i>Asst. Secretary</i>	Ronald H. Partizian
Irene Maroney, <i>Treasurer</i>	Aldona J. Skrypa
Martin Barbato	Deborah Farrar Starker
Eleanor Barbash Berman	Ellen Steinberg
Andrew B. Boles	Advisors to the Board:
W. Stanley Brown	Barbara Cicco
Rodger K. Herrigel	Nino Coviello
	Stacy Russo

### METC Staff

Vivian C. R. James, *Jefferson W. Kirby Executive Director*  
 Peter Rothenberg, *Curator*  
 April Lyzak, *Museum Coordinator*  
 Meg Wastie, *Curator of Education*

#### Educators

Kathleen Brennan Barrett • Kati Brower  
 Victoria Jensen • Jennifer Markovitz  
 Mary Ellen McVeigh • Rachel Prager  
 Marie Seilus • Margaret Skelly • Stephanie Turner

#### Volunteers

Gene Fox • Sandy Miller Citron  
 Diane Celler-Samiljan • Tyler Haupt

Newsletter: April Lyzak

Photos: Tom Judd, Peter Rothenberg & April Lyzak

### Museum of Early Trades & Crafts

9 Main Street, Madison, New Jersey 07940

Phone: 973-377-2982 Fax: 973-377-7358

Email: info@metc.org Web: www.metc.org

Hours: Tues.-Sat: 10am-4pm & Sun: Noon-5pm

(Summer Hours: Tues.-Sat. 10am-4pm)

Admission: Adults: \$5.00

Students, Seniors & Children: \$3.00

Family Rate: \$13.00

Members: FREE



## FROM THE DIRECTOR



It was a whirlwind of activities for us at the Museum this spring. Our *Orange Intuitive Program* went into effect bringing in class after class of students from the East Orange area. We also hosted workshops, a green fair, and a mini art exhibit by Chatham's talented ECLC students, and numerous other exhibit-related programs.

Our biggest event this spring was recognizing Mark De Biasse as our 2011 *Craftsman of the Year*. A well deserved honoree, Mark has been working with the Museum and getting his students involved with local history since 2004. The reception, held in June, was one of our best. It was a pleasure to see how genuinely appreciative Mark was to be our honoree.

With summer around the corner, we have started up the popular Downtown Concert Series. This is a series of 9 free outdoor concerts. If you haven't done so already, I encourage you to come on down and enjoy the family-friendly entertainment. I would like to thank the Star Ledger, Provident Bank, Blue Ridge Mountain Sport, Whole Foods and the Arts Council of the Morris Area for their generous support as sponsors of the concerts this year. I would also like to thank Madison Honda and Madison's Downtown Development Commission for their continued help. You can find more information about the concerts on the back page of the Newsletter.

We will also be starting our Summer Camp for a Day in July. This year's camp themes are unique and are guaranteed to be loads of fun for all who participate. Sign-up now!

This fall we are looking forward to the new exhibit, *Whimsies: Ken Olsen & the Folk Art Tradition*. It will be a magical collection of American folk art created by Madison's own Ken Olsen. We will be presenting a number of related programs throughout the exhibit's duration. We hope you can join us for some of them.

I hope you all have a wonderful summer and get a chance to come by and visit the Museum!

Sincerely,

Vivian C. R. James

Jefferson W. Kirby Executive Director

## SAVE THE DATE!

The Museum's annual



# ICE CREAM SOCIAL

Saturday, July 9<sup>th</sup> 1-3pm

## ECLC & EPOCH Artists Inspired by Museum



By Robert B.

On Tuesday, May 24<sup>th</sup> months of Museum of Early Trades & Crafts visits and artistic efforts culminated in the opening exhibit reception for *Amazing! Impressions of the Museum of Early Trades & Crafts*. Over 50 visitors gathered at the Museum to meet the artists and see their creations.

Over the past six months, 30 selected art students from ECLC in Chatham and EPOCH in Madison visited the Museum to be inspired by the century-old James Building, former home to Madison's library. They arrived by bus, by car, by train, and by foot, eager to explore the building and absorb themselves in finding "art" around the building and then creating their renditions of the building in their own artistic language.

A typical visit consisted of the arrival of the artists—barreling through the doors—amid "Hello's" and hugs and racing for their art folders, spending focused time on examining the building and its artifacts, choosing areas to sketch (later to be redone in their interpretations), writing their activities in their hand-made personal journals, and sharing their thoughts, their creations, and their writing with their peers.

Their experience did not stop, however, at the doors of the Museum. Dedicated artists, they continued their work in their art classes at ECLC. They have been like magicians, transforming what could be considered mundane to some into something different and wondrous, giving visitors to the exhibit the chance to look at ordinary objects with new eyes.

ECLC teachers Mary Ann Walter, Pat Lenzo, Judy McGrath, and their assistants; and the Museum's Curator of Education Meg Wastie and Curator Peter Rothenberg have been fortunate to have been able to guide these artists through this unique experience.

The American poet Ralph Waldo Emerson once said, "*Imagination is not a talent of some men, but is the health of every man.*" These visiting artists from ECLC have proven that it is indeed healthy to use their imagination, and they have shown their creativity through their artistic renderings produced at the Museum and in a future permanent exhibition at ECLC in Chatham.

The program was supported through a generous grant from the Ronald McDonald House Charities of the New York Tri-State area, the Provident Bank & the Junior League of Summit.

-Meg Wastie, Curator of Education

### INSPIRATION FROM OUR CURRENT EXHIBIT, MARINERS, MERCHANTS & PIRATES -



By Jaqueline B.



By Michael T.



By Alyssa M.



By Manuel T.

### INSPIRATION FROM THE MUSEUM'S HOME, THE JAMES LIBRARY BUILDING -



By Michelle M.



By Joshua I.



By Stephanie S.

By Michelle L.  
(hoops seen left)



By Benjamin H.

## **CALEB THE CARPENTER...CONTINUED**

"Caleb the Carpenter" will also be honored this summer with a day camp of the same name centered on Caleb and his craft. Children ages 4-12 can sign up to learn about Early American tools and use tools to create a variety of carpentry projects during the day.

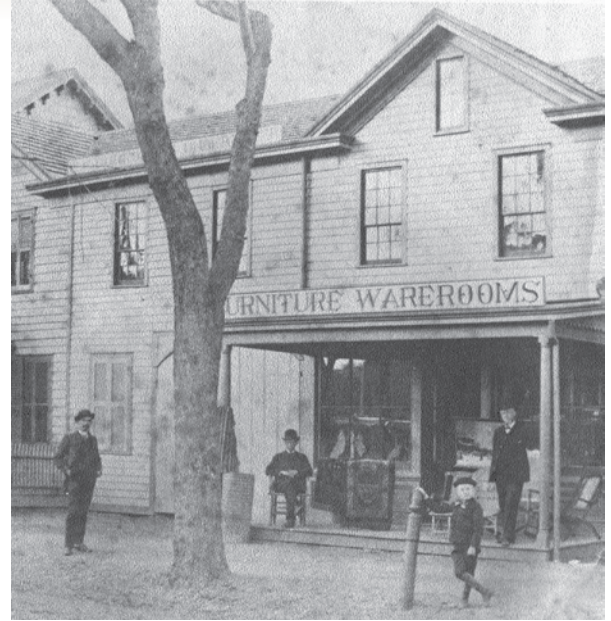
Stop by to visit the Museum of Early Trades & Crafts soon and greet our newest guest!

-Meg Wastie, Curator of Education  
& Peter Rothenberg, Museum Curator

### Caption:

Burroughs Business image is taken from a 1976 calendar page donated by Martha Lewis and Susan Kohr See acc# METC -199

The older man on the porch is Edwin P. Burroughs; the boy in foreground is Preston Burroughs.



## **CRAFTSMAN OF THE YEAR RECEPTION**



Madison Town Council Member, Jeanie Tsukamoto (left), Craftsman of the Year, Mark De Biasse, Museum Board of Trustee Chair, Allen Black and the Museum's Jefferson W. Kirby Executive Director, Vivian C.R. James pose for a photograph.

On Thursday, June 2<sup>nd</sup> the Museum honored Madison High School Social Studies Department Chair, Mark De Biasse as the 2011 *Craftsman of the Year*. Surrounded by family and friends, Mark was delighted to be honored. Madison Town Council member and Museum Liaison, Jeanie Tsukamoto presented Mark with a proclamation declaring June 2, 2011 "Mark De Biasse Day." She also presented him with a Congressional Citation from Congressman Rodney Frelinghuysen. Museum Curator of Education Meg Wastie took a moment to discuss the working relationship Mark has had with the Museum (*seen below right*). "Mark is dedicated to local history and, through his involvement with the Museum of Early Trades & Crafts, he has enhanced the lives of his students in many special ways." said Meg.

Since 2004, Mark De Biasse has been enhancing the education of his history students at Madison High School by promoting a community-based approach to the study of state and local history. Always using an innovative teaching style, Mark creates projects and programs that have given his students a hands-on experience with local Madison history. He has also intertwined a number of the Museum's exhibits with the Social Studies curriculum at the High School.

In 2005, in preparation for the exhibit, *Wintering Over*, students wrote *en persona* journals based on objects in the exhibit, developed a presentation about their findings, and served as docents for *Wintering Over*. In addition, participants created a children's activity booklet about the exhibit.



## SUMMER CALENDAR OF EVENTS

### JULY

#### DOWNTOWN CONCERT SERIES

Friday, July 8<sup>th</sup>  
& Friday, July 22<sup>nd</sup>

6 PM - 8 PM

Free outdoor concerts. Rain or shine!  
See page 8 for more details.

#### FAMILY FUN DAY ICE CREAM SOCIAL Saturday, July 9<sup>th</sup>

1 PM - 3 PM

Cool off from the hot summer sun at METC's annual Ice Cream Social. Make your own ice cream sundae and participate in the numerous games and activities taking place, while you explore our current exhibit. Drop in any time between the hours of 1-3 pm to participate. Pre-registration recommended, call x14. \$3 for Members & \$5 for Non-Members.

#### smART stART Monday, July 11<sup>th</sup> & Monday, July 25<sup>th</sup>

1 PM - 3 PM

Children and their parents are invited to drop in and participate in creative, hands-on projects and story time. For ages 3-5. Pre-registration required one week in advance of each session! Admission is \$3/person. To register call x12.

#### SUMMER CAMP FOR A DAY:

##### ●NAVIGATION AND KNOTS

Tuesday, July 12<sup>th</sup>

##### ●PIRATE ADVENTURE DAY I

Wednesday, July 20<sup>th</sup>

##### ●SEASHELLS & SAILOR VALENTINES

Thursday, July 28<sup>th</sup>

10 AM - 2 PM

See page 6 for more information.

### AUGUST

#### SUMMER CAMP FOR A DAY:

##### ●PIRATE BOOTY!

Tuesday, August 2<sup>nd</sup>

##### ●PIRATE ADVENTURE DAY II

Wednesday, August 10<sup>th</sup>

##### ●PIRATE TALES

Thursday, August 18<sup>th</sup>

##### ●CALEB THE CARPENTER

Tuesday, August 23<sup>rd</sup>

##### ●DOLLY & ME TEA PARTY

Wednesday, August 31<sup>st</sup>

10 AM - 2 PM

See page 6 for more information.

#### DOWNTOWN CONCERT SERIES

Friday, August 5<sup>th</sup>

& Friday, August 19<sup>th</sup>

6 PM - 8 PM

Free outdoor concerts. Rain or shine!  
See page 8 for more details.

#### smART stART

Monday, August 8<sup>th</sup>

& Monday, August 22<sup>nd</sup>

1 PM - 3 PM

Children and their parents are invited to drop in and participate in creative, hands-on projects and story time. For ages 3-5. Pre-registration required one week in advance of each session! Admission is \$3/person. To register call x12.

#### A PIRATE ADVENTURE Saturday, August 13<sup>th</sup>

1-3 PM

Become a pirate for a day. Make your own pirate hat and pet parrot and go on a treasure hunt in search of booty. Advance registration required; call x12. \$5 Admission for participants & Regular Admission for all others.

#### ABC'S OF KINDERGARTEN

FRIDAY, AUGUST 19<sup>TH</sup>

11 AM - Noon

Learn the ABC's of Kindergarten to help you and your child prepare for this next big step. Q & A, story telling and crafts will take place. Pre-registration required, call x12. \$3 admission/ person.

### SEPTEMBER

#### DOWNTOWN CONCERT SERIES

Friday, September 2<sup>nd</sup>

Friday, September 16<sup>th</sup>

Friday, September 30<sup>th</sup>

6 PM - 8 PM

Free outdoor concerts. Rain or shine!  
See page 8 for more details.

#### FAMILY FUN DAY Saturday, September 10<sup>th</sup>

1 PM - 3 PM

Join us at the Museum for lots of family fun and a craft activity. Advance registration recommended; call x12. Regular Admission.

#### smART stART

Monday, September 12<sup>th</sup>

& Monday, September 26<sup>th</sup>

1 PM - 3 PM

Children and their parents are invited to drop in and participate in creative, hands-on projects and story time. For ages 3-5. Pre-registration required one week in advance of each session! Admission is \$3/person. To register call x12.

#### NEW EXHIBIT OPENS

Tuesday, September 13<sup>th</sup>

#### Regular Hours

In the new exhibit, *Whimsies: Ken Olsen & the Folk Art Tradition*, visitors will be delighted by the artistic and amusing creations of artist/craftsman Ken Olsen. Designed in a traditional Folk Art style, his numerous pieces will come to life and fascinate patrons of all ages. Throughout the exhibit's duration, various public programs, events and activities will take place. *Whimsies: Ken Olsen & the Folk Art Tradition* will be open to the public until Sunday, January 15<sup>th</sup>. Regular Admission.

## SUMMER CAMP FOR A DAY

*Camp for a Day* is a great way to get that full camp experience, without the long term commitment!

☀ Campers will learn about different aspects of history & participate in a variety of hands-on activities & craft projects based on the Museum's exhibits.

☀ Each camp takes place once a week from **10AM to 2PM**.

☀ Each camp is different & campers may sign-up for as many sessions as they please!

- *Navigation and Knots*, Tuesday, July 12<sup>th</sup>
- *Pirate Adventure Day I*, Wednesday, July 20<sup>th</sup>
- *Seashells and Sailor Valentines*, Thursday, July 28<sup>th</sup>
- *Pirate Booty!*, Tuesday, August 2<sup>nd</sup>
- *Pirate Adventure Day II*, Wednesday, August 10<sup>th</sup>
- *Pirate Tales*, Thursday, August 18<sup>th</sup>
- *Caleb the Carpenter*, Tuesday, August 23<sup>rd</sup>
- *Dolly & Me Tea Party*, Wednesday, August 31<sup>st</sup>

Members: \$25 for any 1 session and \$65 for any 3. Non-Members: \$30 for any 1 session and \$80 for any 3.

Appropriate for children ages 4 to 12. (Campers ages 4-6 are required to have an adult present.)

Space is limited. Advance registration required. Call 973-377-2982 x12 for more information.



## CRAFTSMAN OF THE YEAR RECEPTION...CONTINUED



Mark warmly greeted guests as they arrived at the reception.

When the Museum's exhibit *Designing Tools* was on display in 2006, Mark developed an independent research project in which students researched the original patents for many of the artifacts on exhibit, and then at the opening reception, acted as exhibit interpreters discussing the design and use of the different artifacts found in the exhibit.

The Luke Miller Project (2007), supported by a grant from the History Channel, involved collaboration with the Museum and Madison Historical Society. Students engaged in a study of Major Luke Miller, a Revolutionary soldier, farmer, and blacksmith, and the Luke Miller homestead property, on which a forge believed to have been used during the Revolutionary War still stands. Students conducted research at the Morris County Library, the Museum, and the Historical Society.

Their discoveries were used to produce the DVD, *Luke Miller: Forging History*, a 45-minute documentary on early history of Madison and one of its most famous residents. Their research laid the groundwork for another grant awarded to the Madison Historical Society to fund an archaeological dig of the site.

In 2009, Mark's students learned about Early American food preparation and cooking, in conjunction with the Museum's exhibit, *Food for Thought*. The students documented their research results and prepared dishes for their classmates and Museum visitors to taste.

Most recently, Mark's students played detectives as they worked to discover the original ownership of a "mystery" trunk found in the Museum's collection. Based on research of early governors of New Jersey, students presented arguments defending their choice of the trunk's owner, and wrote persuasive essays which are currently part of the Museum's *Mariners, Merchants & Pirates* exhibit.

Mark's class projects have continually put students in control of their own learning, giving them a much more fulfilling educational experience. Mark's tireless efforts in working with his students in the education, and his discovery and preservation of Madison's town history have made him an excellent honoree for the Museum of Early Trades & Crafts' 2011 *Craftsman of the Year* award.

## **THANK YOU FOR YOUR SUPPORT!**

### **NEW & RENEWING MEMBERS**

Astri Baillie & John Kimball Joseph L. Balwierczak Martin Barbato Allen E. Black & Nancy Northrup The Boles Family Michelle Braun Kathryn Burgmeyer Malcolm Dick John M. Egan Carolyn French & Steve Maeske John & MaryBeth Forte Kenneth J. Goldman Stephen E. Gray & Kathleen M. Ulrich Kathleen Havens Glenn & Carol Head	Rodger & Jillian Herrigel Hugo & Susan Hilgendorff John F. Hoover Sue Idleman Karen Jones Thomas & Ellen Judd Herbert P. Kean Woody & Ruth Kerkeslager Ann Denise Korinda Mrs. Irene Kosinski David & Sylvia Luber Mr. & Mrs. Sal & Anne Luciano Irene Maroney & Claudio Bergamasco Dorothy Meaney Diana Mejia-Sydenstricker	Angelina C. Monti Ronald Partizian Mr. & Mrs. Nelson Schaenen, Jr. Judith B. Seery Art Powell & Joanne Spigner Dr. & Mrs. G. Solitare Olga & Mike Soriano Eleanor Stoddard Mildred E. Swartz Laurence G. Tabor Mr. & Mrs. R. Donald Thomson Tom & Betsy Uhlman Patricia Weissner Ruth J. Zowader & Philip M. Anderson, III
--	--	---

### **ANNUAL APPEAL & DONATIONS**

<p style="text-align: center;"><b><i>SILVER</i></b></p> Allen E. Black & Nancy Northrup New Jersey Carpenters Funds Charles & Maryann Pascarella	Laura & Larry Fuhro Stephen & Shade Grahling Glenn & Carol Head Henry & Loida James Thorpe & Lucinda Kelly Richard & Judith Kuskin George Laufenberg Mr. & Mrs. Louis Napolitano Michael & Margaret Nicolais Hunt S. Patterson, Jr. Mr. & Mrs. Kenneth G. Rapp Stacy Russo Jerry & Barbara Stevenson Florence L. Vavrek Lois & Ben Wolkowitz	<p style="text-align: center;"><b><i>ASSOCIATE</i></b></p> Nancy Adamczyk Donna R. Barnes Michael & Helen Caulfied Robert Clark Robert Conley Daniel A. D'Andrea Mark R. & Kathryn De Biasse Patricia Dufort Henry & Claire Joostema Bonnie J. Monte Angelina C. Monti Ronald Partizian Virginia & Robert Pierson	Frank Hershkowitz & Lorraine Staples Paul W. Stephenson Mr. & Mrs. Benjamin Ostrom Pat Weissner Eugene & Rose Zipper
<p style="text-align: center;"><b><i>BENEFACTOR</i></b></p> Astri Baillie & John Kimball Rodger & Jillian Herrigel	<p style="text-align: center;"><b><i>DONATIONS</i></b></p> Sandy Miller Citron & Jon Citron Kathleen Havens Mr. & Mrs. Robert M. Kissane Wilma Kurtz		
<p style="text-align: center;"><b><i>FRIEND</i></b></p> John H. & Barbara C. Barry Noreen Beaman Jeffery & Wendy Benton Eleanor & Herb Berman John & MaryBeth Forte			

(Memberships/donations received after May 31<sup>st</sup> are not included on these lists)

## **ANNUAL FUND**

### **Please Support the Museum's Annual Appeal.**

Your donation helps the continuation of our on-going, high-quality public and education programs.

- |  |   |   |
|--|---|---|
| <input type="checkbox"/> Associate \$50-99 | <input type="checkbox"/> Friend \$100-249 | <input type="checkbox"/> Benefactor \$250-499 |
| <input type="checkbox"/> Silver \$500-999  | <input type="checkbox"/> Gold \$1000-2499 | <input type="checkbox"/> Platinum \$2500 +    |

- I am interested in including the Museum of Early Trades & Crafts in my/our will or estate plan.
- I have included the Museum of Early Trades & Crafts in my/our will or estate plan.

Name: \_\_\_\_\_

Address: \_\_\_\_\_ City: \_\_\_\_\_ State: \_\_\_\_\_ Zip: \_\_\_\_\_

Email: \_\_\_\_\_ Phone: \_\_\_\_\_

Payment method:  Check  MC  VS  Matching Gift form enclosed

Card #: \_\_\_\_\_ Exp. \_\_\_\_/\_\_\_\_ Signature: \_\_\_\_\_

Please make checks payable to - Museum of Early Trades & Crafts



# Museum of Early Trades & Crafts

9 Main Street  
Madison, New Jersey 07940  
www.metc.org

## MUSEUM OF EARLY TRADES & CRAFTS Presents The Madison Downtown Concert Series

# FREE!

## OUTDOOR CONCERTS

EVERY OTHER FRIDAY JUNE - SEPTEMBER

6PM - 8PM

Bring a blanket or chair for a free outdoor family-friendly music concert on the lawn of the Museum.

Rain or Shine! Picnicking welcome!

In case of inclement weather concert will be held inside the Museum on a first-come-first-serve basis.

June 10<sup>th</sup>

**BOB ROCCO & JUMPING THE GUN**  
Classic Rock



June 24<sup>th</sup>

**CHIA'S DANCE PARTY**  
Colombian Jazz



July 8<sup>th</sup>

**BRYNN STANLEY**  
Jazz/Classic Rock/Oldies



July 22<sup>nd</sup>

**FULL CIRCLE**  
Pop/Classic Rock



August 5<sup>th</sup>

**KATI & THE LIL' SWING BAND**  
Delta Blues/Swing



August 19<sup>th</sup>

**THE FROSTKINGS**  
Blues/Swing/R&B



September 2<sup>nd</sup>

**NO NAME JAMES & BUTTERBALL**  
Funk/Blues/Rock



September 16<sup>th</sup>

**BIG BAD IRISH**  
Rock/Blues



September 30<sup>th</sup>

**THE MOOD SWINGS**  
with opening act **NO SHAME**  
Classic Rock



### RAIN OR SHINE!

Call 973-377-2982 x14 or visit

[WWW.METC.ORG](http://WWW.METC.ORG) for more information.

Sponsored by



Arts Council of the Morris Area



With support from...  
madison honda



SUMMER EDITION 2011